

Energy Support Service

Are you an unpaid carer?
Let our Energy Support Services help you

We can provide:

Energy efficiency and advice

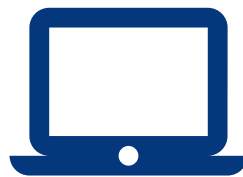
Small energy saving products

Advice with Energy Companies

Referrals to key energy support organisations
for help with energy debt, heating, insulation
and more...



**CALL THE TEAM FOR AN
INFORMAL CHAT WITH
ONE OF OUR ENERGY
SUPPORT ADVISORS**



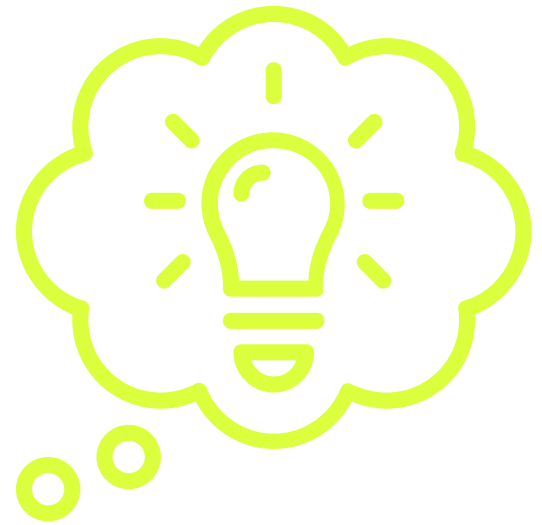
**EMAIL THE TEAM WITH
YOUR QUERY AND ONE OF
OUR FRIENDLY ADVISORS
WILL GET BACK TO YOU**

 SCCEnergySupportTeam@carers.sefton.gov.uk

 **0151 288 6060**

 **27-37 South Road, Waterloo, Liverpool, L22 5PE**

There are lots of simple steps you can do to cut down on your energy usage and reduce your bills. You might be amazed how much money you can save by some easy changes.



- Replace your light bulbs with LED bulbs, approx. £55 per year
- Fit a water efficient shower head - £45 per year
- Keep shower times to 4 minutes or less - £70 per year
- Fill the kettle with the amount of water you need - £11 per year
- Turn your appliances off at the plug instead of leaving them on standby £55 per year
- Draught proof your windows and doors and block any cracks in your floors and skirting boards - £45 per year
- Turn off lights when you're not using them £20 per year
- Install a chimney (balloon) draught excluder - £65 per year
- Reduce your washing machine use by one run a week - £38 per year
- Turn the central heating boiler down to 60°C - 9% of total gas used

Funded by the Energy Industry Voluntary Redress Scheme - website - www.energyredress.org.uk